



## iSAP2000

Multiservice Access Multiplexer (2U)

The iSAP2000 is a 2U 19" 6 slots rack type E1 Time Division Multiplexer for fractional E1 network across, which is designed for nonstop operation. There are 6 slots available for hot-swappable I/O cards and two slots are provided for power supplies. Uplink supports E1 copper connection, maximum up to 96x E1 cross connect for Voice and Data. The iSAP2000 optionally accommodates up to two separate power supplies, which may derive power from AC (110/220) or DC (-36~72V) power sources. When two power supplies are installed, the modules provide complete power redundancy and are hot swappable even during the E1 cards' transmission. The iSAP2000 provides E1 copper uplink, the maximum E1 supports up to 96 E1 channels with cross connection for Voice and Data, the interface included RS232, V35, FXS, FXO, ET100 & E&M. CTC Union also provides and maintains our own SmartView EMS (Element Management System) which is a Java based client/server manager for monitoring, configuration, maintenance, or troubleshooting a large number of network elements over a long period of time.

### Line Cards

- E1 card: iSAP-8E1, iSAP-16E1
- Power modules: 2000-AC240, 2000-DC48
- I/O cards: iSAP-RS232, iSAP-N\*64K/V35, iSAP-ET100, iSAP-E&M, iSAP-FXS, iSAP-FXO

### Features

- Supports MAX. 96xE1 with full cross-connect, Supports DS0 cross-connect
- Supports 16 channel Main E1 LTU card
- Supports E1 time slot broadcast function
- Modular design for Voice I/O card, the voice I/O card has two sub-module, each sub-module supports 4-port FXO/FXS
- All modules and cards support hot-swapping
- DCE card types included N\*64K, RS232(Sync/Async) ET100, ET100R, E&M, FXO, FXS...etc.
- Supports Console, Telnet, SNMP and GUI management
- Available types of power built-in : AC+AC, AC+DC, DC+DC
- Modular design, 2U 19", 6-slot for I/O cards

### Specifications

Management	
NMS	10/100Base-TX
Console	RS232
iSAP-8E1, iSAP-16E1	
Interface	Supports 8E1, 16E1 two types interface
E1 Cross connect	96 x E1 transparent cross connect, supports E1, time slot
CAS cross connect	Supports 16 time slot CAS follow voice time cross connect
Line Impedance	120 / 75 ohms
Frame format	CAS(PCM30)/CCS(PCM31)
Connector	RJ45
iSAP-RS232	
Data rate	≤38.4kbps Async or 64/128kbps Sync
Ports	6-port
Interface	RS232
iSAP-N*64K/V35	
Data rate	N x 64kbps(N=1~30 or 31)
Ports	4-port
Connector	V.35 Interface
iSAP-ET100	
Standards	IEEE 802.3, 802.3u
MDI/MDIX	Auto
Data rate	10/100Mbps
Ports	4-port
Connector	RJ45
iSAP-E&M	
Loop current	5~30 mA, maximum 70mA
Ports	8-port
Connector	RJ45

iSAP-FXS	
ITU-T Standard	G.712/G.713/G.714
Line resistance	600Ω
Off-hook current	25mA
Line distance	2km
Ports	8-port
On-hook current	10mA+/-3mA
Effective Ring	Frequency: 25Hz    Voltage: 75V, peak to peak110V MAX line resistance: 1500Ω
Connector	RJ45
iSAP-FXO	
ITU-T Standard	G.712/G.713/G.714
Line resistance	600Ω
Line distance	2km
Ports	8-port
Caller ID	Supports DTMF, FSK Standard
Connector	RJ45
Electrical & Mechanical	
Dimensions	440 x 300 x 88mm (D x W x H)
Environmental	Operating: 0~60°C Storage:-25~70°C Humidity: 10~90%, non-condensing
Power	AC 220V: 165~265V, 50~60Hz DC -48V:-36~-76VDC
Power Consumption	< 40W

## Application

Figure1 : Point to Multi-points 16E1 aggregation

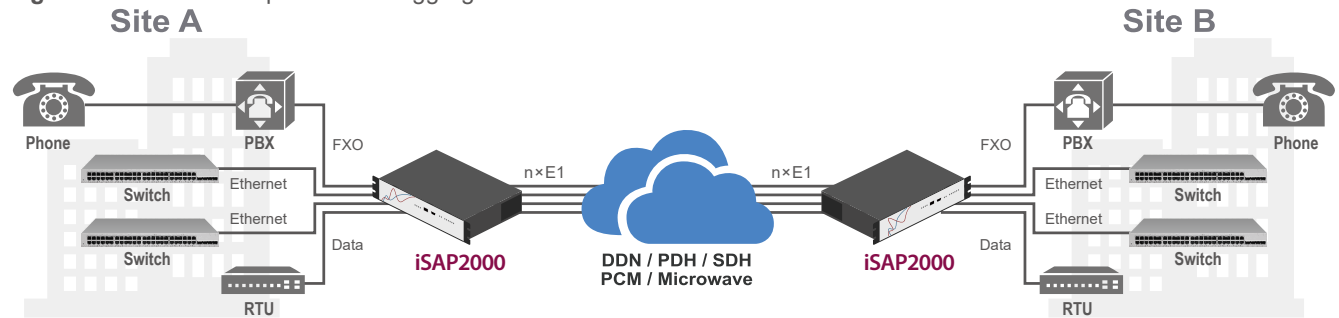
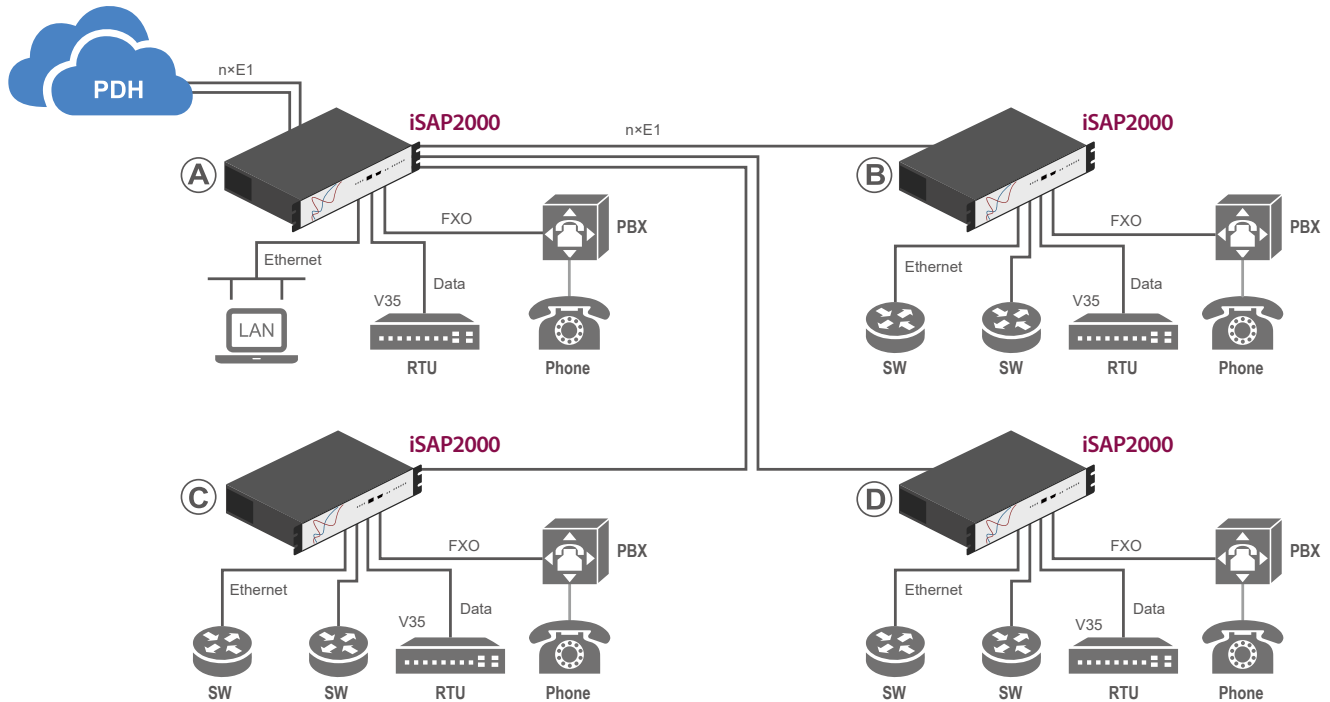


Figure2 : Point to Multi-points 63E1 aggregation over STM-1



## Line Cards



**iSAP-8E1R**  
**iSAP-16E1R**  
Main E1 Cross Connect  
Aggregate Card

### Features

- Available in 8,16 E1 channels
- Supports PCM31 or PCM30 framed/unframed
- Path / Card Redundancy / Hot Swappable
- E1 timeslots can support cross-connect function
- E1 channel can act as Sub-E1 for drop & insert

### Specifications

Frame format	CAS(PCM30)/CCS(PCM31); CRC on/off, framed/unframed
Bit rate	2.048Mbps
Line codes	HDB3/AMI
Rx sensitivity	0 ~ -43dB
Tx driver	1.5km over 0.5mm E1 cable
Line impedance	75 ohms (unbalanced) 120 ohms (balanced)
Pulse amplitude	nominal 2.37V (75ohm) nominal 3.00V (120ohm)
Pulse shape	According to ITU-T G.703
Dimensions	23 × 181 × 197mm (W × D × H)
Temperature	0°C ~ 50°C
Humidity	5 ~ 95%
MTFB	65,000 hrs



**iSAP-RS232**  
RS232 Sync/Asyn Card

### Features

- Six independent channels
- N x 64 setting from any E1 channel
- Transparent asynchronous rates up to 115.2kbps
- Synchronous 64 or 128Kbps, DCE mode
- Diagnostic loop backs
- Hot swappable

### Specifications

Datacom interfaces	ITU-T V.24 compliant
Data speed	Multiplexing Nx64K data onto E1 time-slot
Data access	N × 64K (N=1 to 2)
Access mode	RS-232, supplied with corresponding interface cable
Diagnostics	DCE
Diagnosics	Local / Remote / Bi-directional Loop
Dimensions	23 × 181 × 197mm (W × D × H)
Temperature	0°C ~ 50°C
Humidity	5 ~ 95%
MTFB	65,000 hrs



## iSAP-Data

N x 64 Synchronous Serial Card

### Features

- Four independent Synchronous channels
- N x 64 setting from any E1 channel
- Each channel operates in native DCE mode
- Diagnostic loop backs
- LED indicators for Power, Alarm, RD/TD activity
- Hot swappable

### Specifications

<b>Datacom interfaces</b>	ITU-T and ANSI compliant
<b>Data speed</b>	Multiplexing Nx64K data onto E1 time-slot
<b>Data access</b>	N x 64K (N=1 to 30, or 31)
<b>Access mode</b>	DCE
<b>Diagnostics</b>	RS-530, RS-449, V.35, X.21, supplied with corresponding interface cable
<b>Dimensions</b>	23 x 181 x 197mm (W x D x H)
<b>Temperature</b>	0°C ~ 50°C
<b>Humidity</b>	5 ~ 95%
<b>MTFB</b>	65,000 hrs



## iSAP-ET100

Fast Ethernet Bridge Card

### Features

- Four independent Ethernet over E1 channels
- Utilizes HDLC WAN encapsulation
- MAC Address learning table with 5 minute aging
- Auto-MDIX and Auto-Negotiation
- Hot swappable

### Specifications

<b>Standards</b>	IEEE 802.3, IEEE 802.3u
<b>Ports</b>	4-port RJ45
<b>Throughput latency</b>	1 frame
<b>MDI/MDIX</b>	Auto
<b>Buffer</b>	4K bits
<b>Encapsulation</b>	HDLC
<b>Data rate</b>	10/100Base-TX
<b>Packet size</b>	64 ~ 1522 bytes
<b>Dimensions</b>	23 x 181 x 197mm (W x D x H)
<b>Temperature</b>	0°C ~ 50°C
<b>Humidity</b>	5 ~ 95%
<b>MTFB</b>	65,000 hrs



## iSAP-E&M

E&M Voice Card

### Features

- Eight independent channels
- 2/4 wire independent setting
- 1x 64 setting from any E1 channel
- E&M Signaling PBX trunks
- Provides E line, M line, SB (battery) and SG (ground) lines
- Supports types I, II, III, IV or V
- G.711 Codec
- LED indicators for Power, Alarm, activity
- Hot swappable

### Specifications

<b>Loop current</b>	5~30 mA, maximum 70 mA
<b>Return loss</b>	300-600Hz >12dB (2W), 600-3400Hz >15dB (2W), 300-3400Hz >20dB (4W)
<b>Group delay</b>	@-10dBm0 <750uSec(2W) <600uSec(4W)
<b>Total Distortion</b>	according to ITU-T G.223
<b>Channel crosstalk</b>	< -65dB, 1020Hz@0dBm
<b>Noise</b>	< -65dBm0p weighted
<b>Dimensions</b>	23 x 181 x 197mm (W x D x H)
<b>Temperature</b>	0°C ~ 50°C
<b>Humidity</b>	5 ~ 95%
<b>MTFB</b>	65,000 hrs



## iSAP-FXS

FXS Voice Card

### Features

- Eight independent channels
- 2 wire independent setting
- G.711 Codec
- 1x 64 setting from any E1 channel
- Provides ring function
- Supports caller-ID forwarding
- PSTN extension or direct "Hot-line"
- Links telephone to telephone or extends POTS
- LED indicators for Power, Alarm, RD/TD activity
- Hot swappable

### Specifications

<b>Effective ring voltage</b>	AC 75VRMS +/-15V@25Hz +/-3Hz, <10% THD
<b>Ring voltage at 300mA load</b>	>50VACRMS
<b>Loop resistance</b>	<1.8K Ohms, including 300 Ohms for telephone
<b>On-hook current</b>	10mA +/-3mA
<b>Off-hook loop current</b>	18-50mA
<b>Channel crosstalk</b>	< -65dB, 1020Hz@0dBm
<b>Noise</b>	< -65dBm0p weighted
<b>Surge protection</b>	1000V, 10uSec transient response, decay to 50% in 700uSec 300VRMS for less than 200mSec; no component damage 220VRMS for 15 minutes; damage only local loop
<b>Dimensions</b>	23 x 181 x 197mm (W x D x H)
<b>Temperature</b>	0°C ~ 50°C
<b>Humidity</b>	5 ~ 95%
<b>MTFB</b>	65,000 hrs



## iSAP-FXO FXO Voice Card

### Features

- Eight independent channels
- 2 wire independent setting
- G.711 Codec
- 1x 64 setting from any E1 channel
- PCM30 R2 Signaling PSTN trunks
- Links PBX to PBX or extends POTS
- LED indicators for Power, Alarm, activity
- Hot swappable

### Specifications

<b>On-hook DC resistance</b>	> 100K Ohms
<b>Ring AC resistance</b>	> 7.5K Ohms
<b>Ring power sensitivity</b>	< 50mW
<b>Off-hook DC resistance</b>	< 300 Ohms
<b>Max. Input Voltage</b>	70VDC
<b>Max. Input Current</b>	150mA
<b>Channel crosstalk</b>	< -65dB, 1020Hz@0dBm
<b>Noise</b>	< -65dBm0p weighted
<b>Return loss</b>	300-600Hz >12dB (2W) 600-3400Hz >15dB (2W) 300-3400Hz >20dB (4W)
<b>Dimensions</b>	23 x 181 x 197mm (W x D x H)
<b>Temperature</b>	0°C ~ 50°C
<b>Humidity</b>	5 ~ 95%
<b>MTFB</b>	65,000 hrs

## iSAP-EMS Network Management

As the network size grows year by year, the network can be a challenge for administrators to maintain and react the possible network failures promptly. Especially when hundreds of devices are spread across many sub networks in different locations. In order to simplify network management, CTC ISAP-EMS Platform provides a centralized remote management platform that allows administrators easily to monitor and control each device on the network from a single computer. This allows efficient network management and lightens the load off the administrators who can better use the time for other value-added tasks

### ▪ User- Friendly Operation Interface

With intuitive and user-friendly graphical user interface (GUI), CTC ISAP-EMS presents the graphical topology in the platform. Double-click an icon in the Device GUI interface to see the front panel graphical view and get real-time element status updates. Configuration templates reduces manual, repetitive configuration time. You can apply a template to multiple ports or devices. With the configuration changes are just simple mouse clicks away.

### ▪ Network Monitoring and Management

It is vital to monitor network traffic to be aware any abnormal activity. CTC ISAP-EMS allows you to monitor network traffic and generate graphical report down to the port level. In addition, event and alarm management tools can issue SNMP trap and log the event in detail for prompt alert. Event logs are displayed in different colors to indicate the event severity level. Actions can be triggered by trap automatically without manual initiation; thus leaves flexibility and convenience to network managers

### ▪ Screen-Based User Friendly Network Management

With CTC ISAP-EMS, network maintenance is just a few simple mouse clicks away. Multi-site network operation and maintenance become easier than ever before. You can remotely perform general device maintenance (such as firmware upgrade and configuration file backup/restore) on more than one device on the network

### ▪ Security Access Management

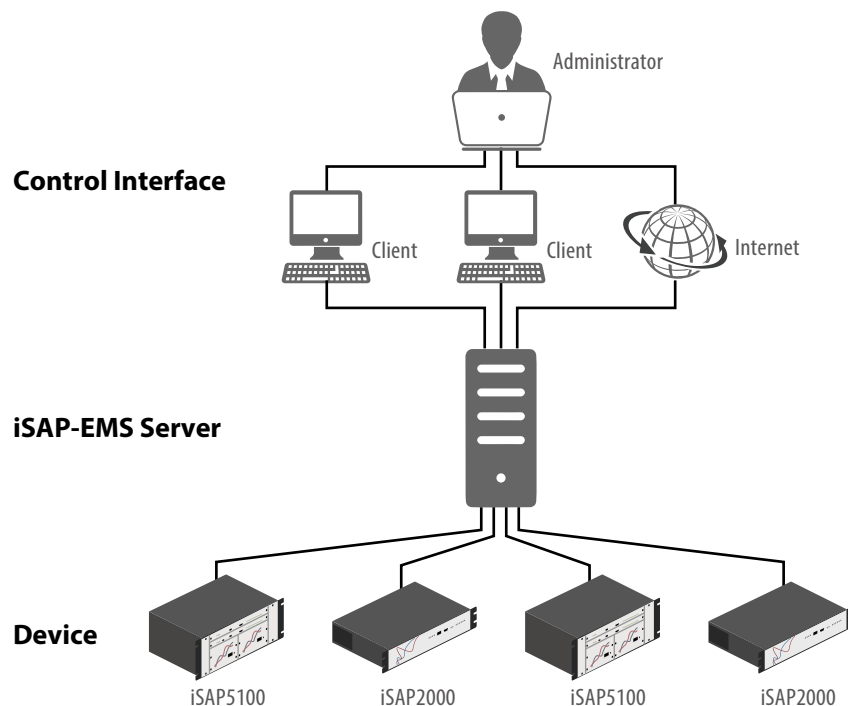
Remote access control is essential for a secure network. In the CTC ISAP-EMS, access to configuration screens and/or status screens are strictly based on user name, password, user's computer IP address and user account category. The three user categories give login accounts different administration authority. The CTC ISAP-EMS allows up to 15 users to log in at a time. Information such as the user ID, user group, IP address, configuration actions and time is logged for security reasons. So network managers know who logged in, when and did what.

### Features

- Remote access control for efficient configuration
- Traffic monitoring and management
- Alarm Trap and event log management
- On-line license key Access
- Allow up to 250 devices management
- Easy and User-Friendly Operation Interface

## Application

Figure1 : Network Scheme Diagram



## Ordering Information

Model Name	Type	Description
iSAP2000-CH	Chassis	2U 19" 6 slots Chassis with built-in CPU card, power modules not included
iSAP2000/AC	Power	AC power plug-in module (165 to 265 VAC)
iSAP2000/DC	Power	DC Power plug-in module (±36 to ±76 VDC)
iSAP-EMS	Software	EverLink2000 EMS software for iSAP5100 and iSAP2000
iSAP-8E1R	Main E1 card	8 channels Main-E1 LTU card: Fractional E1 RJ45
iSAP-16E1R	Main E1 card	16 channels Main-E1 LTU card: Fractional E1 RJ45
iSAP-CAB-RJ45/4BNC	Cable	2ch E1 RJ45 to 4BNC cable (1.5 meter)
iSAP-FXO	Voice card	8 channels FXO interface card
iSAP-FXS	Voice card	8 channels FXS interface card
iSAP-E&M	Voice card	8 channels 2/4 wires E&M voice interface card
iSAP-RS232	RS-232 card	6 channels RS-232 interface card (V4.0), Low speed: 128kbps 19.2kbps Async
CAB-DB62DB25F6-232-LS	Cable	RS-232 adapter cable for low speed: DB62 Male to 6x DB25 Female, 1M
iSAP-ET100	FE card	4 channels 10/100Base-TX Ethernet Bridge card
iSAP-DATA	Data card	4 channels V.35/X.21/RS530/RS449 cards
CAB-HP68MB34F4-V35	Cable	V35 adapter cable for High speed: HP68 Male to 4x MB34 Female, 1M
CAB-HP68DB25F4-530	Cable	RS530 adapter cable for High Speed: HP68 Male to 4x DB25 Female, 1M
CAB-HP68DB15F4-X.21	Cable	X21 adapter cable for High speed: HP68 Male to 4x DB15 Female, 1M
CAB-HP68DB37F4-449	Cable	RS449 adapter cable for High Speed: HP68 Male to 4x DB37 Female, 1M

Chassis  
**iSAP2000** – □□  
 Example: iSAP2000 – CH

Card Type  
**iSAP2000** – □□□□  
 Example: iSAP2000 – 8E1R