

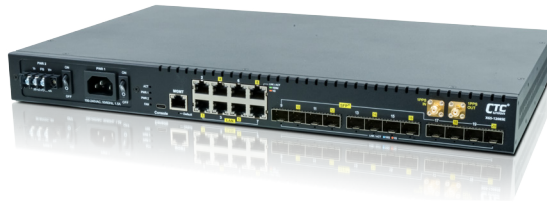
L2+ Managed 10G Ethernet Switch with SyncE

2

XGS-1208SE



8 × GbE RJ45 + 12 × 10G SFP+
L2+ Managed 10G Ethernet Switch with SyncE/PTP



CTC Union Technologies unveils the brand-new gear to enable high-density 10G SFP+ slots Ethernet Switch. The XGS-1208SE is designed to enable the application for 4G/5G mobile backhaul network or core switching and connection for agile network deployment. It is equipped 8 ports GbE RJ45 and 12 ports 10G SFP+ slot in high performance switching and wire speed connectivity to boost the connection efficiency as well as capable of delivering time sensitive application.

The XGS-1208SE is featured robust L2 switching functionality such as VLAN, port trunking, QoS, span tree protocol and IGMP multicast service. The hard-wired based ACL enabled the secured network access and traffic transportation as network administrator desired to reduce the risks of unauthorized or illegal intruders. The diversified management interfaces via Web GUI, Telnet and SNMP offer friendly and ease-to-use as well as secured remotely management in traffic encrypted or isolated.

Every Ethernet copper or fiber port on XGS-1208SE except management port can be configured to deliver the timestamp messages of SyncE or IEEE 1588v2 inside Ethernet packets for the precision time purpose of mobile backhaul or smart factory automation network. XGS-1208SE is built-in 1PPS input and output SMA connectors. The output SMA interface supports the waveform measurement of IEEE 1588v2 via external instrument as well as the input SMA interface can be connected to external time source as the reference clock for the network.

Specifications

Interface	Fiber port: 12x 10G SFP+ Copper port: 8x 10/100/1000Base-T RJ45 1PPS port: SMA connector × 2 (input/output) Cosole port: RS-232 in USB type C
Packet Forwarding Rate	14880pps @10Mbps 148800pps @100Mbps 1488000pps @1000Mbps 14880000pps @10Gbps
Switching Fabric Capacity	256Gbps
Transmission Method	Store and Forward Switching
Packet Buffer	32M bits
MAC Table Size	32K
Jumbo Frame Size	10K Bytes
VLAN Feature	IEEE 802.1Q tagged VLAN (4K VLAN groups), IEEE 802.1ad QinQ VLAN, Voice VLAN MAC based VLAN, Protocol based VLAN, IP subnet based VLAN, Private VLAN for port isolation, VLAN translation
Link Aggregation	Static trunk (SA, DA, IP, TCP/UDP port) IEEE 802.3ad LACP, IEEE 802.1AX, 8 port Max. per LACP trunk group; 10 LACP trunk groups Max
L2 Switching Protection	IEEE 802.1D STP/IEEE 802.1w RSTP/IEEE 802.1s MSTP, Loop Protection
QoS Feature	Hard wired IEEE 802.1p 8 priority queues per port, Traffic scheduling based on strict/WRR priority CoS based traffic classification on switch port, VLAN ID, DSCP, TCP/UDP port IEEE 802.1p priority tag remarking, DSCP remarking Per port/queue based ingress / egress rate limit in steps of 100kbps, IEEE 802.3x flow control IEEE 802.1Qbb priority based full-duplex flow control, Multicast / Broadcast / Unicast storm control with flooding control
Security	Static port security (MAC based), Per port limited MAC learning Port based/MAC base/single/multiple IEEE 802.1x access control 512 ACL rules based on L2~L4 information, RADIUS/TACACS+ AAA, HTTPs & SSH v2 IP/MAC binding, IP source guard & ARP inspection
IP Multicasting	IGMP snooping v1/v2/v3, IGMP proxy, MLD snooping v1/v2, IGMP fast leave IGMP query, IGMP filtering/throttling, MVR (Multicast VLAN Registration)

2-4

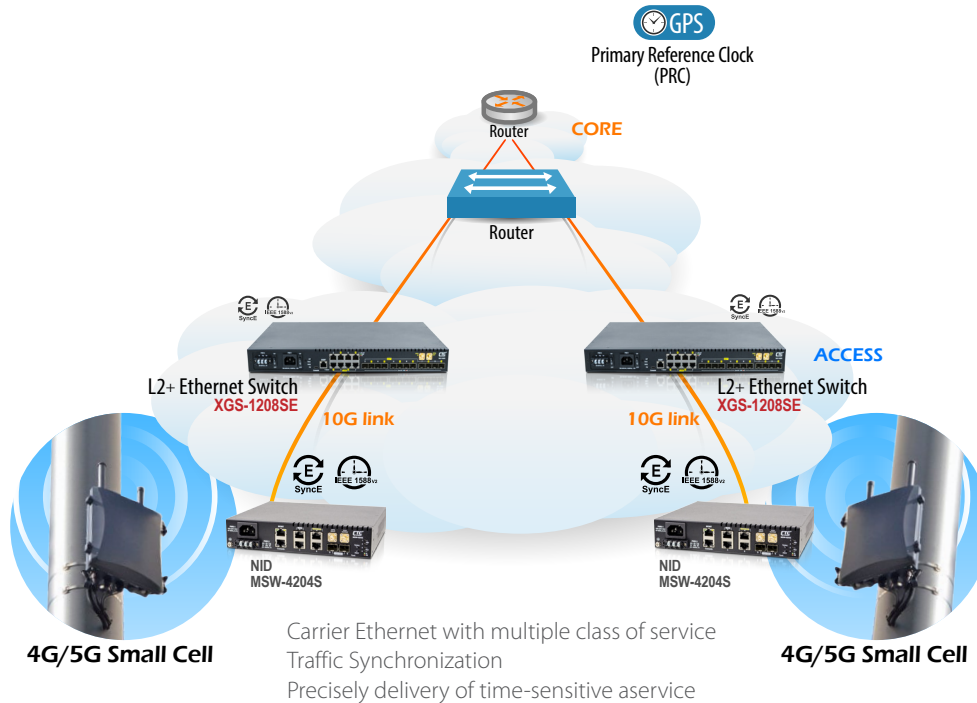
L2+ Managed 10G Ethernet Switch with SyncE

2

SyncE	ITU-T G.8261/G.8262/G.8264 on all Ethernet interfaces, Sync status message support
PTP	ITU-T G.8263 slave clock, ITU-T G.8273.2 boundary clock, ITU-T G.8273.3 transparent clock ITU-T G.8265.1/G.8275.1 telecom profile (optional), IEEE 802.1AS gPTP
Management	WebGUI/Telnet CLI interface, SNMP v1/v2c/v3, RMON I (1,2,3,9 groups) & RFC1213 MIB II DHCP client/snooping/relay option 82, TFTP/HTTP based firmware and configuration upgrade Port mirroring, RSPAN, Event syslog server, DNS client/proxy, NTP client, UPnP IPv4/IPv6 management, SFF-8472 DDMI, IEEE 802.1ab LLDP
Power Input	100~240VAC ; 36~60VDC
Power Consumption	38.4 Watts Max.
Operating Temperature	0~50 °C
Storage Temperature	-25~70 °C
Humidity	5%~95% (non-condensing)
Dimension	440 × 280 × 43.5 mm (W×D×H)
Certification	CE, FCC class A

Application

10G Managed Ethernet Switch with SyncE



Ordering Information

Model Name	Description
XGS-1208SE-AC	8 × GbE RJ45 + 12 × 10G SFP+ Slots L2+ Managed Ethernet Switch with Single AC Power Supply
XGS-1208SE-DC	8 × GbE RJ45 + 12 × 10G SFP+ Slots L2+ Managed Ethernet Switch with Single DC Power Supply (-48V)
XGS-1208SE-AA	8 × GbE RJ45 + 12 × 10G SFP+ Slots L2+ Managed Ethernet Switch with Dual AC Power Supply
XGS-1208SE-DD	8 × GbE RJ45 + 12 × 10G SFP+ Slots L2+ Managed Ethernet Switch with Dual DC power Supply (-48V)
XGS-1208SE-AD	8 × GbE RJ45 + 12 × 10G SFP+ Slots L2+ Managed Ethernet Switch with AC + DC Power Supply

Optional Accessory

• 10G SFP+ Transceiver Module

Model Name	Description
SFM-1000-SR85	10G SFP+ SR/SW MMF 300m, 850nm VCSEL, 10G Ethernet/FC/SDH/SONET
SFS-1010-LR31	10G SFP+ LR/LW SMF 10km, 1310nm DFB DML, 10G Ethernet/FC/SDH/SONET
SFS-1040-ER55	10G SFP+ ER/EW SMF 40km, 1550nm DFB EML, 10G Ethernet/FC/SDH/SONET
SFS-1080-ZR55	10G SFP+ ZR/EW SMF 80km, 1550nm DFB EML, 10G Ethernet/FC/SDH/SONET

2-5