

# Business Connection Service based on EDD/NID equipment (Philippines Telecom Operator)

## Case Introduction



The high economical growth rate had driven Philippines becoming one of the shiny nations among the emerging South-East Asia regional market in the past several years. In order to fulfill the rapidly business expansion of enterprises themselves, the reliable and high speed communication with branch offices or external supplier has become the basic but mandatory demand for daily business operation. The telecom operators in Philippines had been driven by such great market potential of domestic or even international enterprise customers besides the residential subscribers.

The legacy TDM based leased line or even xDSL based service had been far away from the demanding network service requirements of enterprise's expectation. All of the telecom operators in Philippines had migrated their fiber network infrastructure successively. Besides, the Carrier Ethernet standard defined by MEF (Metro Ethernet Forum) has been the leading technology to provision the business connection service application. The CE 2.0 contains the four types of service, which are E-Line/E-LAN/E-tree/E-Access, to cover all of desired scenarios from different categories of enterprise.

## Customer Demands

- Full network compatibility between CTC Union MSW-202/MSW-404 and Cisco ME3400/3600 equipment series in L2 network transmission.
- CTC Union MSW-202/MSW-404, managed CE 1.0/2.0 certified/compliant CPE in delivering Direct Internet and Leased Line type of service application.
- The CTC Union MSW-202/MSW-404 requires to be interoperable by third-party NMS for MRTG performance monitoring and management
- The EDD equipment has to support Ethernet OAM IEEE 802.3ah, IEEE 802.1ag, ITU-T Y.1731 with built-in RFC2544 functionality and MAC swappable loopback feature for throughput performance monitoring.

## About CTC Union

CTC Union, founded in 1993, is committed to developing and manufacturing and selling network communication products. In particular, the focus on fiber optical technologies, Ethernet technologies and the integration of broadband access technologies.

With leading-edge technology and high quality service as the driving force, CTC Union continued steady growth, and become a top global equipment supplier of innovative last-mile access in the telecommunications market.



# CTC Union Solutions

- EDD - MSW-202

2x 100/1000Base-T + 2x 100/1000Base-X SFP Managed Ethernet Switch

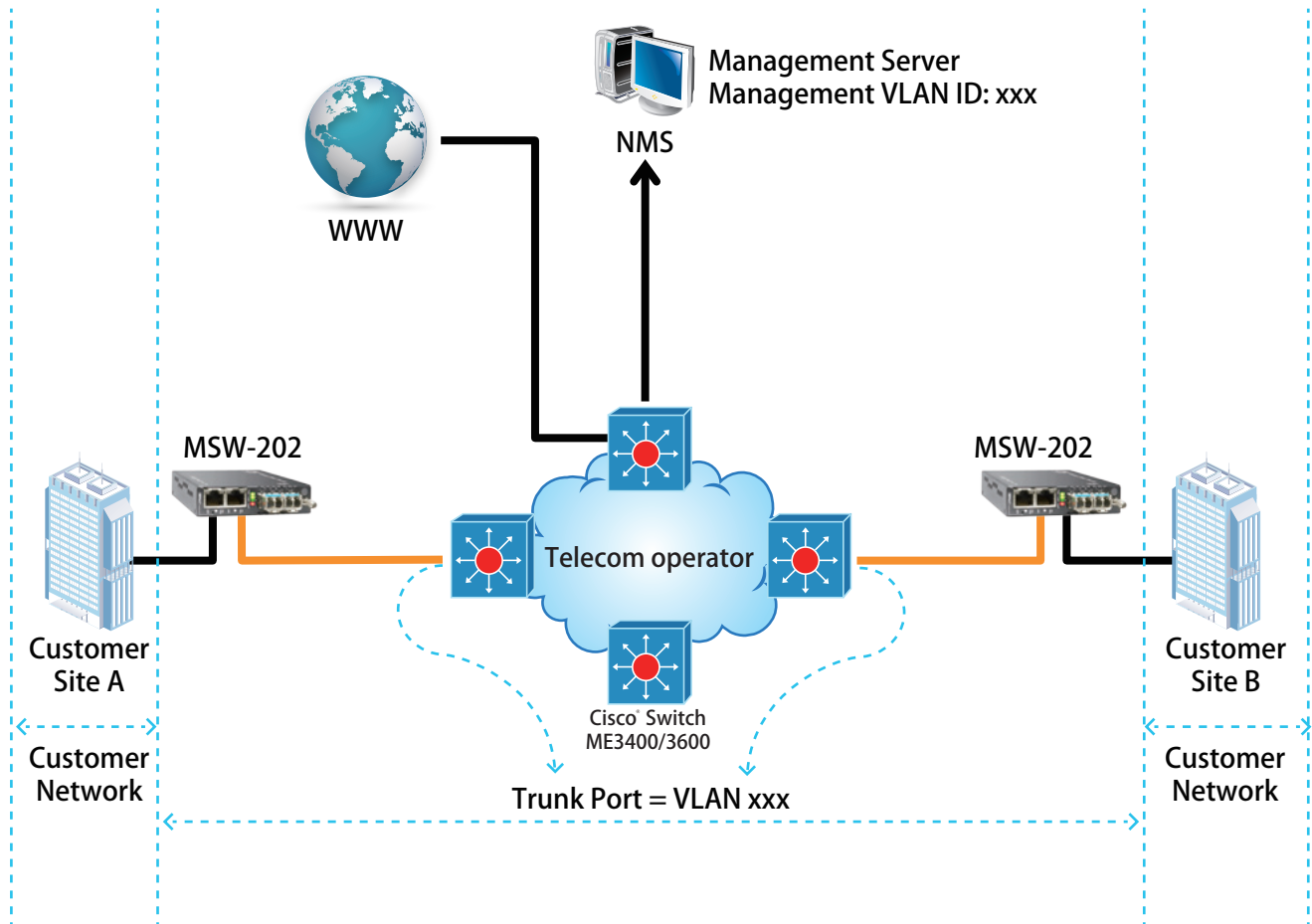


- NID - MSW-404

4x 100/1000Base-T + 4x 100/1000Base-X SFP Managed Ethernet Switch



## Topology



CTC UNION TECHNOLOGIES CO., LTD.

8F, No.60, Zhouzi St. Neihu, Taipei 114, Taiwan TEL: +886 2 2659-1021 FAX: +886 2 2659-0237 sales@ctcu.com

© Copyright 2016 CTC UNION TECHNOLOGIES CO., LTD.

CTC UNION and the CTC UNION logo are trademarks of CTC UNION TECHNOLOGIES CO., LTD. All rights reserved. All other trademarks are the property of their respective owners.

www.ctcu.com

Specifications & design are subject to change without prior notice. Please visit CTC UNION website for more details.