

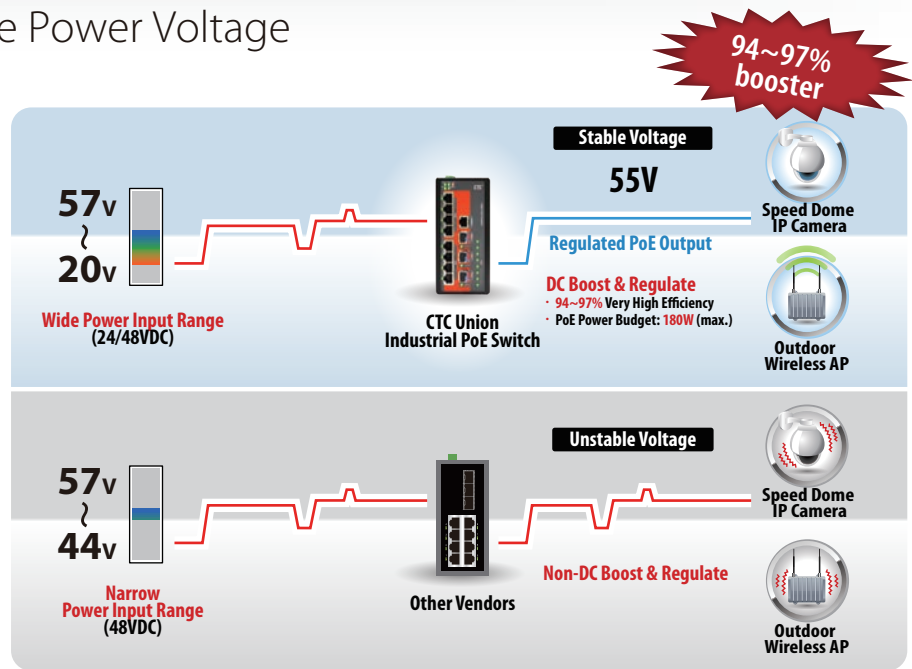


Key Technologies :

- Supports IEEE 802.3af/802.3at standards
- Boost and regulate PoE voltage technology
- Advance PoE management : Auto test , and Auto reset when PD fail & PD On/Off scheduling

Boost DC Power & Regulate Power Voltage

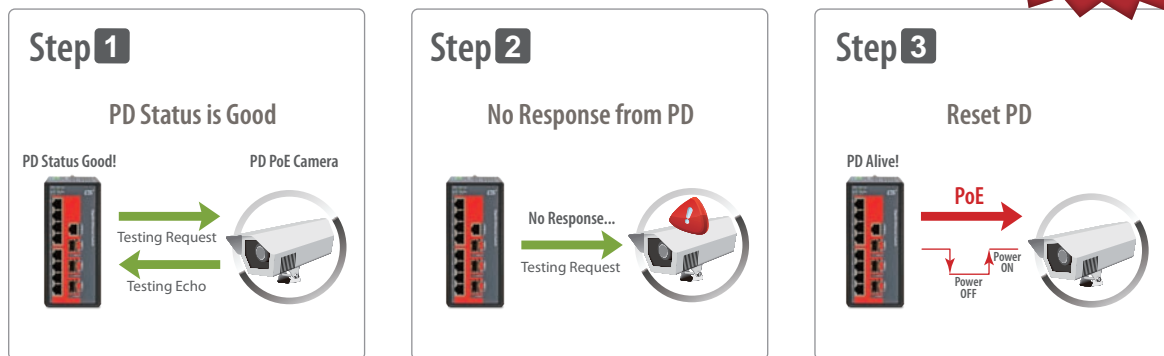
- Wide range input power 24/48VDC (20~57VDC)
- Built-in very high efficiency (94~97%) to boost PoE output voltage
- Stabilized and regulated PoE output voltage at 55VDC



Remote PD Auto Test & Reset

- PoE PD failure auto checking, and auto reset when PD fail
- Reduce operational expenses.

The feature is processed as following:



PD Auto Test & Reset Process

Weekly PoE ON/OFF Scheduling

- Offer weekly PoE ON/OFF scheduling function to provide PoE to PDs
- Reduce operational expenses.

Port 1	SUN	MON	TUE	WED	THU	FRI	SAT
08:00	ON	OFF	OFF	ON	ON	ON	OFF
08:30	ON	OFF	OFF	ON	ON	ON	OFF
09:00	ON	OFF	OFF	ON	ON	ON	OFF
09:30	ON	OFF	OFF	ON	ON	ON	OFF
10:00	ON	OFF	OFF	ON	ON	ON	OFF
10:30	ON	OFF	OFF	ON	ON	ON	OFF
11:00	OFF	ON	ON	ON	OFF	OFF	OFF
11:30	OFF	ON	ON	ON	OFF	OFF	OFF
12:00	OFF	ON	ON	ON	OFF	OFF	OFF
12:30	OFF	ON	ON	ON	OFF	OFF	OFF
13:00	OFF	ON	ON	ON	OFF	OFF	OFF
13:30	OFF	ON	ON	ON	OFF	OFF	OFF
14:00	OFF	ON	ON	ON	OFF	OFF	OFF



Industrial PoE Series

PoE Switch



- **Redundant** and wide range input power, 24/48VDC (20~57VDC)
- Very high efficiency boost (**94%~97%**) technology
- **Regulated** voltage at 55VDC for PoE output

(Below Features only for managed models)

- Advance **PoE management**, PoE PD Auto check/reset
- **SmartView™** & **SmartConfig™** management
- u-Ring (up to **5 Rings**), ITU-T G.8032 ERPS, MSTP, RSTP, STP for Redundancy Cabling
- SNMP, Web, Telnet, CLI, IPV6, DHCP, RMON, MIB II, ACL, QoS, CoS, Security, IGMP, VLAN, LACP, **IEEE1588 PTP V2**

Model Name	Managed	Total Port	UTP		Fiber		PoE Port IEEE 802.3at	Certification			
			10/100 Base-TX	10/100/1000 Base-T	1000Base-X	100/1000Base-X		Railway EN50121-4	UL60950-1	EN61000-6-2 EN61000-6-4	CE FCC
IFS-802GS-8PH		10	8		2 SFP		8	✓		✓	✓
IGS-600-4PH24		6		6			4	✓	✓	✓	✓
IGS-401F-4PH24		5		4	1 SC		4	✓	✓	✓	✓
IGS-402F-4PH24		6		4	2 SC		4	✓	✓	✓	✓
IGS-402S-4PH24		6		4		2 SFP	4	✓	✓	✓	✓
IFS-402GSM-4PH24	✓	6	4			2 SFP	4	✓	✓	✓	✓
IFS-803GSM-8PH24	✓	11	8			3 SFP	8	✓	✓	✓	✓
IGS-803SM-8PH24	✓	11		8		2 SFP	8	✓	✓	✓	✓
IGS-402SM-4PH24	✓	6		4		3 SFP	4	✓	✓	✓	✓

Media Converter with PoE



- Conversion between Ethernet UTP and fiber interface
- Supports LFPT (Link Loss Pass Through)
- **Redundant** and wide range input power, 12/24/48VDC (9.6~57VDC)
- **Regulated** voltage at 55VDC for PoE output
- Very high efficiency boost (**94%~97%**) technology

(Below Features only for managed models)

- Bandwidth control, VLAN, Remote **loop back test**
- PoE configuration and monitor
- **SmartView™** for centralized managed
- Web, SNMP, In-band for management

Model Name	Managed	UTP		100 Base-FX	Fiber		PoE Port IEEE 802.3at	EN50121-4	Certification	
		10/100 Base-TX	10/100/1000 Base-T		Dual Speed 100/1000Base-X	EN61000-6-2 EN61000-6-4			CE FCC	
IMC-1000-PH12			1		1 SC		1	✓	✓	✓
IMC-1000S-PH12			1		1 SFP		1	✓	✓	✓
IMC-100-PH12		1			1 SC/ST		1	✓	✓	✓
IMC-1000M-PH12	✓		1		1 SC		1	✓	✓	✓
IMC-1000MS-PH12	✓		1		1 SFP		1	✓	✓	✓
IMC-100M-PH12	✓	1			1 SC/ST		1	✓	✓	✓



ITS



Toll Collection



Surveillance



Tunnel Security

EN 50155 PoE Switch



- **Redundant** and wide range input power, 24/48VDC(20~57VDC)
- Very high efficiency boost (**94%~97%**) technology
- **Regulated** voltage at 55VDC for PoE output

(Below Features only for managed models)

- Advance **PoE management**, PoE PD Auto check/reset
- **SmartView™** & **SmartConfig™** management
- u-Ring (up to **5 Rings**) , ITU-T G.8032 ERPS, Ring, MSTP, RSTP, STP for Redundancy Cabling
- SNMP, Web, Telnet, CLI, IPV6, DHCP, RMON, MIB II, ACL, QoS, CoS, Security, IGMP, VLAN, LACP, **IEEE1588 PTP V2**

Model Name	Managed	IP67	Total Port	UTP M12		Fiber	PoE Port IEEE802.3at	Certification				Vibration IEC61377	
				10/100 Base-TX	10/100/1000 Base-T	100/1000 Base-X		EN50155	EN50121-4	UL60950-1	EN61000-6-2 EN61000-6-4		CE FCC
ITP-800-8PH24		✓	8	8			8	✓	✓		✓	✓	✓
ITP-802GTM-8PH24	✓	✓	10	8	2		8	✓	✓	✓	✓	✓	✓
ITP-802GSM-8PH24	✓	✓	10	8		2 SFP	8	✓	✓	✓	✓	✓	✓
ITP-800M-8PH24	✓	✓	8	8			8	✓	✓	✓	✓	✓	✓
ITP-G802SM-8PH24	✓	✓	10		8	2 SFP	8	✓	✓	✓	✓	✓	✓
ITP-G800M-8PH24	✓	✓	8		8		8	✓	✓	✓	✓	✓	✓



On-board Train



Public Transportation



Water Utility



Dusty Environment

Industrial PoE Injector



- IEEE 802.3at/af PoE Injector
- Power output 15.4W, 30W, 36W, 60W, 72W select by DIP SW
- Redundant dual input power, 24/48VDC (20~57VDC)
- Very high efficiency boost (94%~97%) technology (INJ-IG60-24)
- Regulated voltage at 55VDC for PoE output (INJ-IG60-24)
- PoE Mode A/B Select by DIP SW
- 4 Pairs (60W/72W) PD handshake mode select by DIP SW (Such as AXIS® IP cam)

Model Name	LAN UTP Port	PoE UTP Port		Input Voltage	Certification		
	10/100/1000 Base-T	10/100/1000 Base-T	PoE 15.4W/30W/36W/60W/72W		EN61000-6-2 EN61000-6-4	EN50121-4	CE, FCC
INJ-IG60-24	✓	✓	✓	24/48VDC	✓	✓	✓
INJ-IG01-PH	✓	✓	✓	48VDC	✓	✓	✓



CTC UNION TECHNOLOGIES CO., LTD.

8F, No.60, Zhouzi St. Neihu, Taipei 114, Taiwan TEL : +886 2 2659-1021 FAX : +886 2 2659-0237 sales@ctcu.com

www.ctcu.com

© Copyright 2014 CTC UNION TECHNOLOGIES CO., LTD.

CTC UNION and the CTC UNION logo are trademarks of CTC UNION TECHNOLOGIES CO., LTD. All rights reserved. All other trademarks are the property of their respective owners.

Specifications & design are subject to change without prior notice. Please visit CTC UNION website for more details.

08/2015 V1.0