

Carrier Ethernet Switch

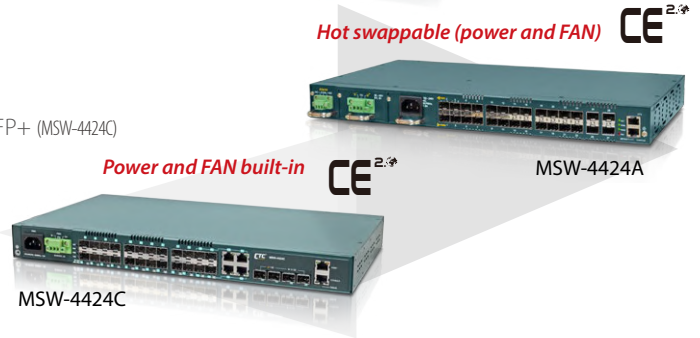
MSW-4428X

- 24x 100/1000Mbps SFP + 4x GbE RJ45 + 4x 10G/1Gbps SFP+
- CE 2.0 standard compliant (E-Line/ E-LAN/ E-Tree/ E-Access service)
- IEEE 802.3ah / IEEE 802.1ag / ITU-T Y.1731 Ethernet OAM
- Built-in RFC2544 & ITU-T Y.1564 tester functionality

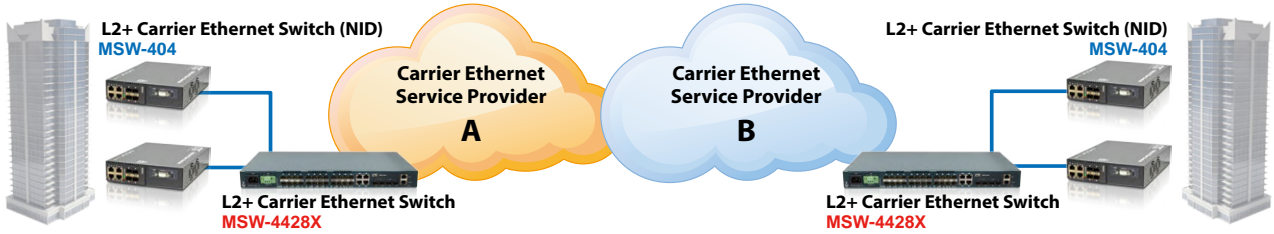


MSW-4424C & MSW-4424A

- 24x 100/1000Mbps SFP + 4x 10G/1Gbps SFP+ (MSW-4424A)
- 20x 100/1000Mbps SFP + 4x GbE combo + 4x 10G/1Gbps SFP+ (MSW-4424C)
- CE 2.0 standard compliant (E-Line/E-Access service)
- IEEE 802.3ah / IEEE 802.1ag / ITU-T Y.1731 Ethernet OAM
- ITU-T G.8032 Ethernet ring protection
- IPv6 support



EVC (Ethernet Virtual Connection) Service Application



NID / EDD

NEW



MSW-4204

- 2x 10M/100M/1G RJ45 + 2x 10M/100M/1G/2.5G RJ45 + 2x 1G/10G SFP+
- CE2.0 standards compliant (E-Line, E-LAN, E-Tree, E-Access services)
- Supports 10K Bytes jumbo frame
- ITU-T G.8032 Ethernet ring protection
- Ethernet OAM support
- RFC2544 & ITU-T Y.1564 tester function

CE 2.0



MSW-404

- 4x GbE RJ45 + 4x 100/1000Mbps SFP
- CE2.0 standards compliant (E-Line, E-LAN, E-Tree, E-Access service)
- Supports 9.6K Bytes jumbo frame
- ITU-T G.8032 Ethernet ring protection
- IPv6 support
- Ethernet OAM support
- RFC2544 & ITU-T Y.1564 tester function
- MPLS-TP compliant to ITU-T G.8113.1

CE 2.0

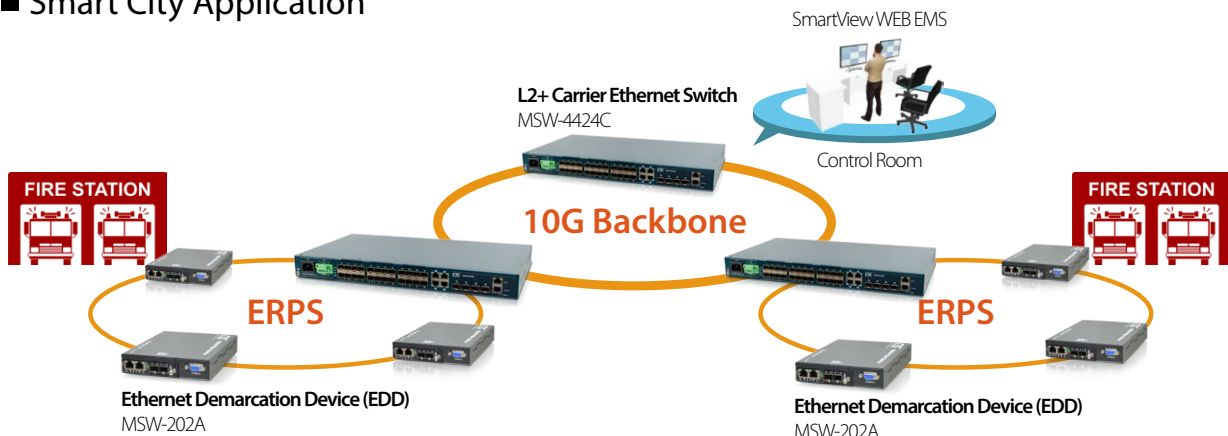


MSW-202A

- 2x GbE RJ45 + 2x 100/1000Mbps SFP
- CE2.0 standards compliant: E-Line, E-Access
- Supports 9.6K Bytes jumbo frame
- ITU-T G.8032 Ethernet ring protection
- IPv6 support
- Ethernet OAM support

CE 2.0

Smart City Application



SyncE Switch

MSW-4424CS

- 20x 100/1000Mbps SFP + 4x GbE combo + 4x 10G/1Gbps SFP+
- CE 2.0 standard compliant (E-Line/E-Access service)
- SyncE / IEEE 1588 v2 (OC/BC/TC mode)
- IEEE 802.3ah / IEEE 802.1ag / ITU-T Y.1731 Ethernet OAM
- ITU-T G.8032 Ethernet ring protection



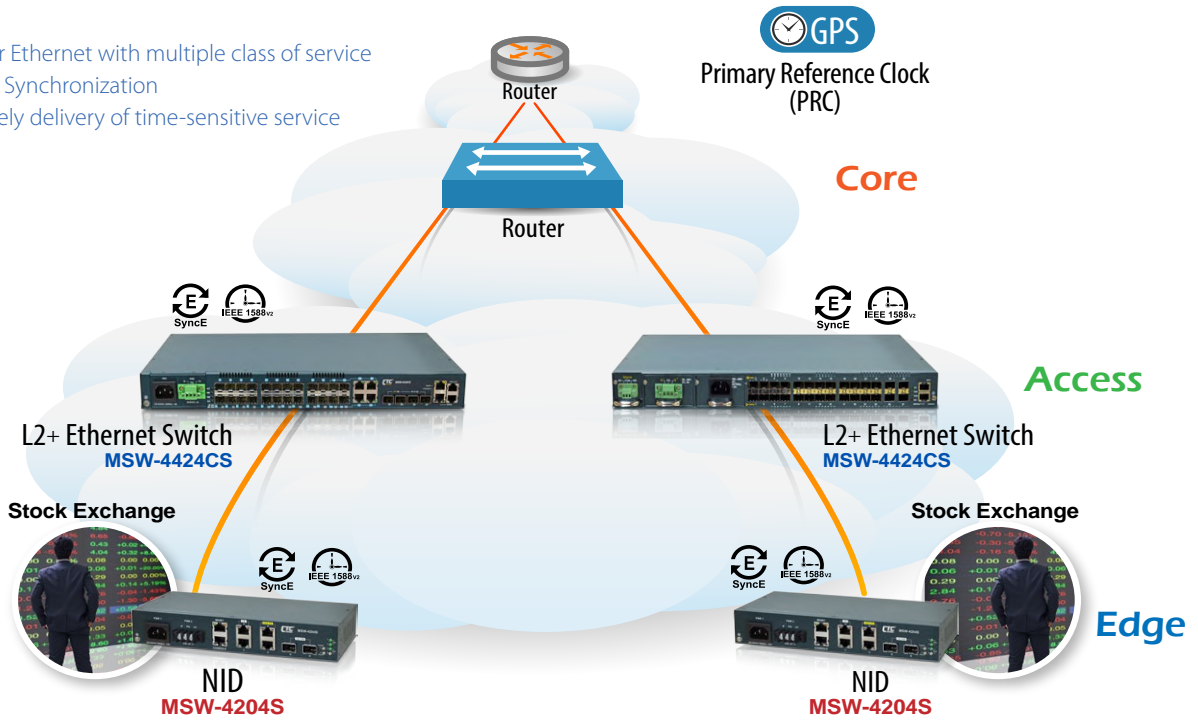
MSW-4204S

- 2x 10M/100M/1G RJ45 + 2x 10M/100M/1G/2.5G RJ45 + 2x 1G/10G SFP+
- CE2.0 standards compliant (E-Line, E-LAN, E-Tree, E-Access services)
- SyncE / IEEE 1588v2 (BC/TC mode)
- Supports 10K Bytes jumbo frame
- ITU-T G.8032 Ethernet ring protection
- Ethernet OAM support
- RFC2544 & ITU-T Y.1564 tester function



Time Synchronization Application

- Carrier Ethernet with multiple class of service
- Traffic Synchronization
- Precisely delivery of time-sensitive service



Enterprise Ethernet Switch

PoE Switch



GSW-3424MP

- 24x 10/100/1000M PoE + 2x Gigabit SFP/ RJ45 combo ports
- IEEE 802.3at/af PoE, up to 30W per port
- PD Alive check
- Automatically adjust fan speed function
- Max power budget 450W
- Per port PoE function enable/disable



GSW3208MP-1

- 8x 10/100/1000M PoE + 2x 1G/SFP
- IEEE 802.1Q tagged VLAN, IEEE 802.1ad Q-in-Q, L2/L3 QoS
- Supports IEEE 802.3af/802.3at
- Max. power budget 180W
- Dynamic power allocation
- Per port PoE function enable/disable



GSW-2020P

- 4x GbE RJ45 + 1x GbE, RJ45 in PoE+/PSE with Cable Tray (option)
- Built-in one PoE+/PSE port for feeding PoE/ PD equipment
- Regulated PoE output voltage (52VDC) to stabilize PoE device, and guarantee delivering PoE power distance up to 100 meter
- Dying gasp in trap message
- DHCP auto provisioning, TR-069

Ethernet Access Switch

NEW



GSW-4448CM

- 24x CSFP (48x GbE) with 4 GbE combo ports + 4x 10G SFP+
- Port-based VLAN, 802.1Q VLAN, Q-in-Q (double tagging) function
- IEEE 802.1D STP / 802.1w RSTP / 802.1s MSTP
- DHCP snooping database agent to upload DHCP snooping table to external TFTP server
- DHCP relay option 82 / DHCP snooping
- IGMP snooping v1/v2/v3, MLD snooping v1/v2, MVR

NEW



GSW-4424CM & GSW-3424FM

- 24x GbE RJ45 ports + 4x 10G SFP+ (GSW-4424CM)
- 24x GbE SFP + 4x GbE RJ45 + 4x 1G/10G SFP+ uplink (GSW-3424FM)
- Port-based VLAN, 802.1Q VLAN, Q-in-Q (double tagging) function
- IEEE 802.1D STP / 802.1w RSTP / 802.1s MSTP
- Static Aggregation, IEEE 802.3ad LACP
- DHCP relay option 82 / DHCP snooping
- IGMP snooping v1/v2/v3, MLD snooping v1/v2, MVR

NEW



GSW-3424M1A

- 20x GbE RJ45 ports + 4x GbE combo ports
- IEEE 802.1Q tagged VLAN, Q-in-Q (VLAN stacking), L2/L3 QoS
- IEEE 802.1D STP / 802.1w RSTP / 802.1s MSTP
- Static aggregation, IEEE 802.3ad LACP
- DHCP relay / DHCP snooping
- IGMP snooping v1/v2/v3, MLD snooping v1/v2, MVR

NEW



GSW-4208CM

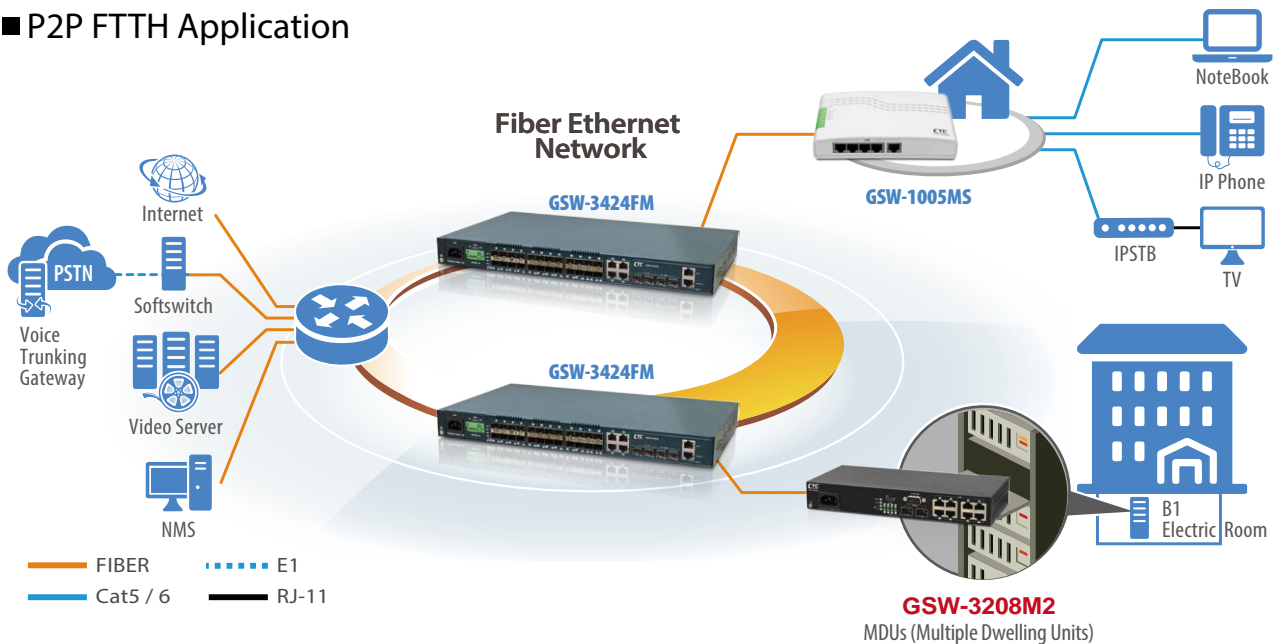
- 8x GbE RJ45 ports + 2x 10G SFP+
- IEEE 802.1Q tagged VLAN, Q-in-Q (VLAN stacking), L2/L3 QoS
- IEEE 802.1D STP / 802.1w RSTP / 802.1s MSTP
- Static aggregation, IEEE 802.3ad LACP
- DHCP relay option 82 / DHCP snooping
- IGMP snooping v1/v2/v3, MLD snooping v1/v2, MVR



GSW-3208M2

- 8x 10/100/1000Base-T RJ45 + 2x 100/1000Base-X SFP
- Optionally support dual power redundancy
- Dying gasp (SNMP trap message)
- IEEE 802.1Q tagged VLAN, Q-in-Q (VLAN stacking), VLAN translation L2/L3 QoS
- IEEE 802.1D STP / 802.1w RSTP / 802.1s MSTP
- DHCP option 82 / DHCP snooping
- IGMP snooping v1/v2/v3, MLD snooping v1/v2, MVR

■ P2P FTTH Application



► CPE Switch

NEW



NEW



QSW-4204M

- 4x 1G/2.5G RJ45 ports + 1x GbE RJ45 + 2x 10G SFP+
- IEEE 802.1Q tagged VLAN, Q-in-Q (VLAN stacking), L2/L3 QoS
- DHCP relay option 82/ DHCP snooping
- IGMP snooping v1/v2/v3, MLD snooping v1/v2, MVR
- Dying gasp in trap message
- DHCP auto provisioning, TR-069
- IPv6 management

GSW-2020C7 & GSW-2020C5

- 7x GbE RJ45 ports + 1x GbE SFP (GSW-2020C7)
- 5x GbE RJ45 ports + 1x GbE SFP (GSW-2020C5)
- IEEE 802.1Q tagged VLAN, Q-in-Q (VLAN stacking), L2/L3 QoS
- DHCP relay option 82/ DHCP snooping
- IGMP snooping v1/v2/v3, MLD snooping v1/v2, MVR
- Dying gasp in trap message
- DHCP auto provisioning, TR-069
- IPv6 management

GSW-1005MS & GSW-2008MS

- 5x GbE RJ45 ports + 1x GbE SFP (GSW-1005MS)
- 8x GbE RJ45 ports + 2x GbE SFP (GSW-2008MS)
- IEEE 802.1Q tagged VLAN, Q-in-Q (VLAN stacking), L2/L3 QoS
- DHCP relay / DHCP snooping
- IGMP snooping v1/v2/v3, MVR
- Dying gasp in trap message
- DHCP auto provisioning

■ Fiber to the Home Triple-Play Application

